

The AgeTech Digest

What You Need to Know About AgeTech Right Now

What Events and Trends Shaped the Past Decade in Age Tech?



The Age Tech ecosystem has grown and matured in the past decade. As another year of aging innovation ends, let's look back at some of the events and trends that shaped the last decade in Age Tech.

[Take Me There](#)

These Are the Age Tech Startups You Need to Watch in 2020



Every year, some companies stand out, find out who you need to be watching in 2020.

[Read This Post](#)



The 2020 version of the [Market Map](#) will be published soon, and you are invited to an exclusive webinar in which I'll reveal the 2020 map and have a short Q&A session.

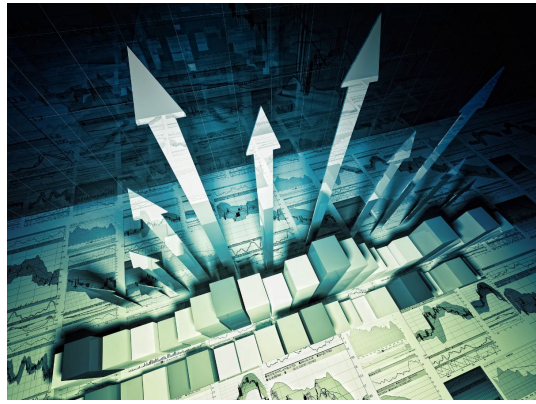
Register [here](#) to secure your spot, there are limited seats available.

[Register for Webinar](#)

Reports Worth Reading:

Longevity Leaders released the [Longevity Trends Report](#) (to

which I had the honor to contribute), the AARP updated their [Longevity Economy Outlook](#) report and the Milken Institute released [this report](#) on age-forward cities.



#Vozrastech is hosting it's annual AgeTech conference in St. Petersburg, register [here](#).



Noteworthy News Items

Partnerships

- Techstars announces [Future of Longevity accelerator](#), in partnership with Pivotal Capital.

- Papa Announces [Launch with Alignment Healthcare](#) for Medicare Advantage Members.
- MyndYou and Allscripts [partner on AI triage for high-risk patients](#).
- Comcast and NuEyes [partner on accessibility](#) for visually impaired.

Investments

- Soundmind [Receives Investments](#) From HearstLab and New York Ventures.
- Ziegler plans [additional \\$50 million](#) AgeTech fund.
- Embodied Labs [Raises \\$3.2 Million](#) in Seed Funding.

Research

- AdhereTech's smart pill bottle intervention [improves adherence](#) without major additional expense.
- [Boston University School of Public Health \(BUSPH\)](#) and [Savonix](#), digital cognitive assessment company located in San Francisco, have announced the [Alzheimer's Disease Discovery Study \(ASSIST\) Study](#), a three-year study of brain health and related factors.

Acquisitions

- Tech start-up Cera [acquires Mears Care](#).

If You're Enjoying This Newsletter, Pay It Forward

Can you think of a colleague or a friend who will enjoy reading this? Click [this link](#) to forward it!



Copyright © 2020 The Gerontechnologist, All rights reserved.

Want to change how you receive these emails?
You can update your preferences or unsubscribe from this list.

